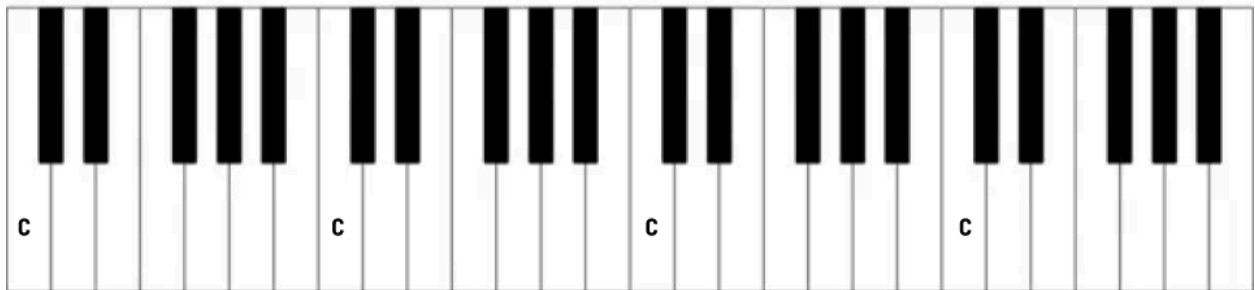


The Musical Alphabet and the Piano Keyboard

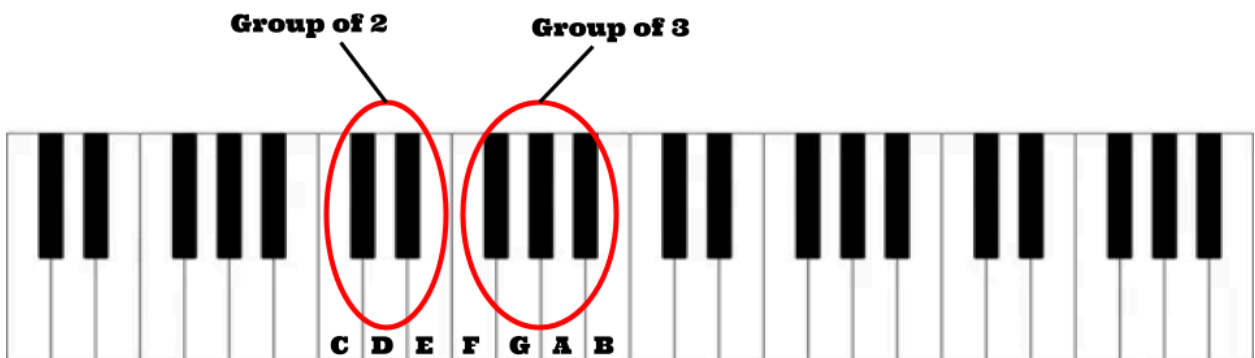
The musical alphabet consists of the first seven letters of the regular alphabet:



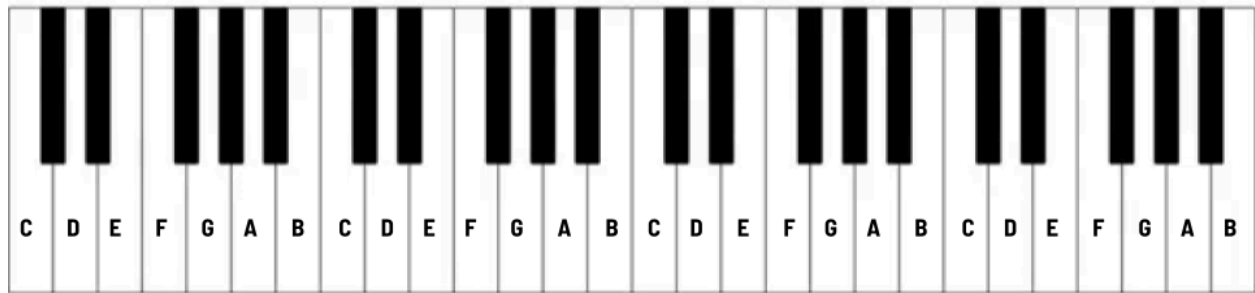
These letters are repeated and can be played or sung in higher or lower pitches. For example, you can play or sing two different C's that sound the same, but are higher or lower than the other C. A piano keyboard can help to visualize these pitch possibilities.



In the picture above, you can see several different C's labelled on the piano keyboard. The keys on the left side are lower in pitch, and the keys on the right side are higher in pitch. You can find a C on the piano keyboard by looking for a group of two black keys. C is located to the left of this group of 2.



The piano keyboard is an excellent resource for understanding music theory. Being able to locate notes on the keyboard and visualize the distance between two or more notes will be useful as we progress to more difficult concepts. Pictured below is a piano keyboard with the notes labelled.



Cs are located to the left of every group of 2 black keys.

Ds are located in between every group of 2 black keys.

Es are located to the right of every group of 2 black keys.

Fs are located to the left of every group of 3 black keys.

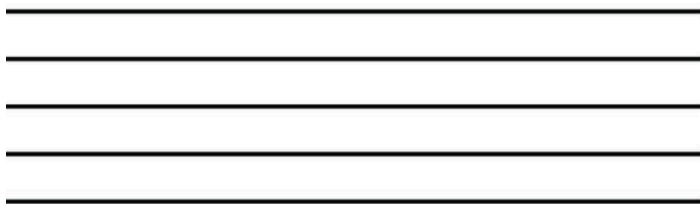
Gs are located in between the 1st and 2nd black keys in a group of 3.

As are located in between the 2nd and 3rd black keys in a group of 3.

Bs are located to the right of every group of 3 black keys.

How do we read music?

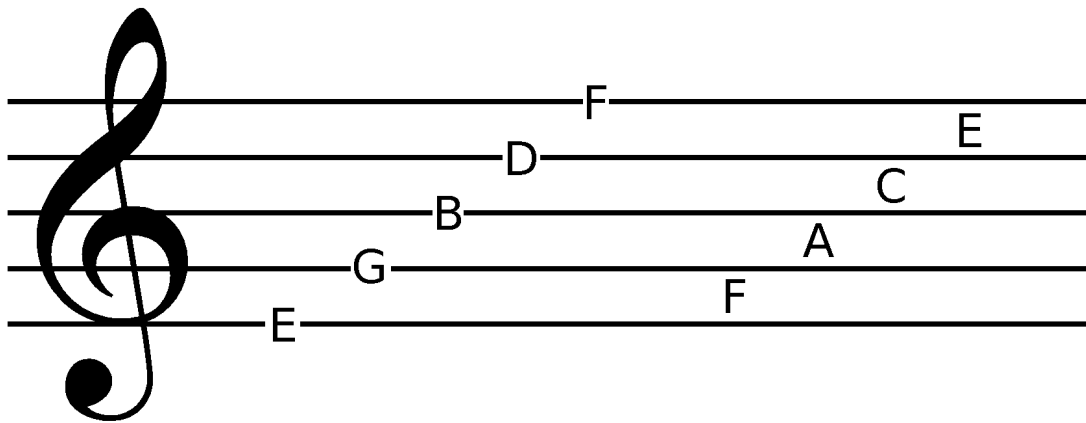
In music notation, a clef is a symbol used to define specific pitches on the lines or spaces of the staff. A staff has FIVE lines and FOUR spaces.



Notes can be placed on the lines or spaces of the staff.

The Treble Clef

The treble clef is used for higher pitches. In piano music, the treble clef displays notes played with the right hand. In choral music, the treble clef displays notes sung by soprano and alto voices.



To remember the LINES on the TREBLE CLEF, you can use the phrase:

Every **G**ood **B**oy **D**eserves **F**udge

To remember the SPACES on the TREBLE CLEF, you can use the word:

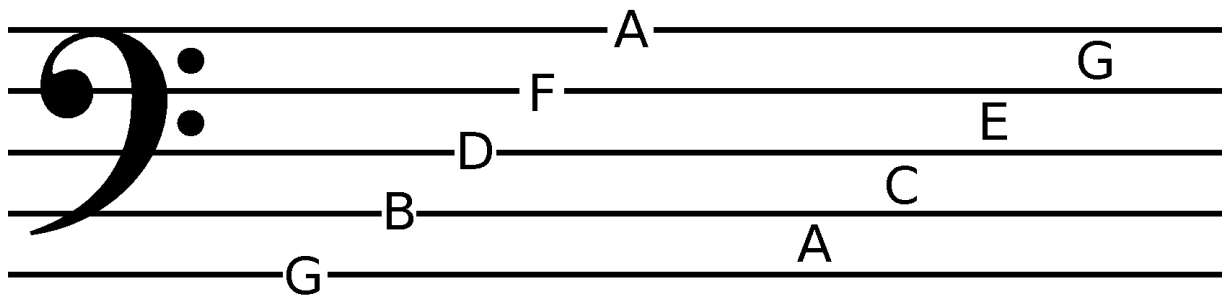
FACE



F G A B C D E F

The Bass Clef

The bass clef is used for lower pitches. In piano music, the bass clef displays notes played with the left hand. In choral music, the bass clef displays notes sung by tenor and bass voices.



To remember the LINES on the BASS CLEF, you can use the phrase:

Good **B**oys **D**eserve **F**udge **A**lways

To remember the SPACES on the BASS CLEF, you can use the phrase:

All **C**ows **E**at **G**rass

